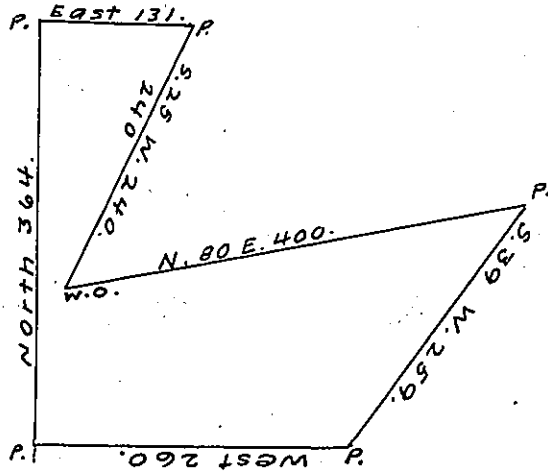


123.

C-216-140-
Mary Sowers.



The above is the Draught of a survey made March 11th 1795 in pursuance of a warrant granted to John Sparhawk on the 14th day of April 1792 - situate Northwest of the Ohio river on the Waters of Beaver Creek - adjoining land granted to Mary Sowers called Heylshem containing 42 1/2 Acres and 55 perches with the usual allowance of 6 pr. Cent &c.

Jn^o Hoge, D.S.

Daniel Brodhead, Esq., S.G.

IN TESTIMONY that the above is a copy of the original remaining on file in the Department of Internal Affairs of Pennsylvania, made conformably to an Act of Assembly approved the 16th day of February, 1833, I have hereunto set my Hand and caused the Seal of said Department to be affixed at Harrisburg, this Nineteenth day of December, 1906

James P. Brown
Secretary of Internal Affairs.